

# PACSETER

Automatic Patty Forming Machine



Height: 28"

Depth: 30"

Width: 28"

Volts: 115 standard/220 available

Motor: 1/2 H.P.

Amps: 13

Weight: 225 lbs

Cycle: 60 standard/ 50 available

Production: 1800-2100 per hour

Mold Plate: up to 3/4" thickness in any shape

## FEATURES AND FACTS OF THE PACSETER:

- 1 shot lubrication
- No special tools required for assembly or disassembly and no loose parts
- Automatically interleaves paper between patties and a raised platform increases patty stackability
- Produces patties from a fraction of an ounce to 8 ounces
- No need to stop machine to reload paper or product
- Meets CA-OSHA requirements
- Drive mechanism engineered for increased durability
- Stainless steel cabinetry
- Volume and pressure controlled simply with the location of a single ring pin
- 3 year parts warranty

### QUICK MOLD PLATE CHANGES

The convenient attachment of the connecting arm allows for quick and easy mold plate changes.

### HEAVY DUTY CONSTRUCTION

The PaceSetter has a durable cast feeder, a solid steel plate frame construction and no. 60 heavy duty rated roller chain.

## MOLD PLATE SHAPES

- Virtually any shape can be molded: square, circle, oval, chop, homestyle, even meatballs
- Varied thicknesses up to 1-1/2"
- Capable of molding from a fraction of an ounce to 8 ounces

# PACESETTER

Automatic Patty Forming Machine

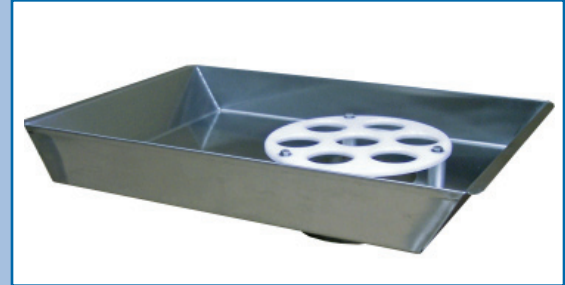


## FEED CONTAINERS FOR THE PACESETTER



### LOW PROFILE STAINLESS STEEL FEED TRAY

- 60 lb capacity
- Heavy gauge stainless steel
- 1 piece body



### STAINLESS FEED PAN

- 40 lb capacity
- Stainless steel and aluminum construction
- Easy access from all sides



### PLASTIC COVERED FEED TRAY

- 75 lb capacity
- Hi-density polyethylene, F.D.A. approved
- Covered for easy operation
- Heavy wall construction



### STAINLESS STEEL COVERED FEED TRAY

- 125 lb capacity
- Heavy gauge stainless steel
- 1 piece body construction
- Covered for easy operation

## ROUND MOLD PLATE SIZES

Thickness	16 @ 1oz	14 @ 1.14oz	12 @ 1.33oz	10 @ 1.60oz	9 @ 1.78oz	8 @ 2oz	7 @ 2.29oz	6 @ 2.67oz
3/16"	3-11/32	3-19/32	3-7/8	4-1/4	4-15/32	4-3/4	5.097	
1/4"	3-7/8	3-3/32	3-11/32	3-21/32	3-27/32	4-3/32	4-3/8	4-23/32
5/16"	2-21/32	2-27/32	3-1/32	3-11/32	3-1/2	3-23/32	3-31/32	4-5/16
3/8"	2-3/8	2-17/32	2-23/32	2-31/32	3-5/32	3-11/32	3-9/16	3-27/32
1/2"	2-1/8	2-9/32	2-15/32	2-11/16	2-27/32	3	3-7/32	3-15/32
5/8"	1-15/16	2-1/16	2-7/32	2-7/16	2-9/16	2-23/32	2-29/32	3-5/32
3/4"	1-3/4	1-29/32	2	2-7/32	2-11/32	2-15/32	2-21/32	2-27/32
Thickness	3oz	5 @ 3.2oz	4 @ 4oz	5oz	3 @ 5.33oz	6oz	7oz	2 @ 8oz
3/16"								
1/4"	5	5.177						
5/16"	4-9/16	4-11/16	5-1/4					
3/8"	4-1/16	4-7/32	4-23/32	5.276	5.447			
1/2"	3-11/16	3-13/16	4-1/4	4-3/4	4-29/32	5.222	5.640	
5/8"	3-11/32	3-7/16	3-27/32	4-5/16	4-7/16	4-23/32	5.100	5.425
3/4"	3-1/32	3-1/8	3-1/2	3-29/32	4-1/32	4-9/32	4-21/32	5



*Patty-O-Matic, Inc.*<sup>®</sup>

THE WORLD'S FINEST FOOD MACHINES

Route 547 P.O.Box 404 Farmingdale, NJ 07727

[www.PattyOMatic.com](http://www.PattyOMatic.com)

Tel: 732.938.2757 Fax: 732.938.5809 Toll Free in USA: 877.938.5244